

2022 Annual Report & Accounts





The Queen's Award for Voluntary Service

The MBE for volunteer groups



Friends of The Royal Marsden Committee from left to right

Front row: Katie Sketchley, Georgiana Fiddian-Green, Sally Robotham, Cristiana Aragoni,

Back row: Camilla Callander (secretary), Caroline Symms (secretary), Charlie Rogers (Young Friends), Louisa Bullard (Young Friends), Sarah Phipps, Sarah Laidlaw, Mel Bowker, Biffa Bradshaw, Emma Rogers, Linda Wimble; Not present: Teresa Dick, Emily Eban, Jane Munday,

CONTENTS

3	Objectives & Public Benefit
4	Administration & Governance
5	Chairs Report
6	Achievements & Performance
10	Fundraising & Events
12	Where the money goes
13	Financial Summary
16	Independent Auditor's Report
19	Statement of Financial Activities
20	Balance Sheet
21	Notes to the Financial Statements

Objectives

The Objectives of Friends of The Royal Marsden, Chelsea are:

To supplement the service provided by The Royal Marsden Hospital, Chelsea, for the health, welfare and comfort of the patients ... by the provision of facilities, buildings and equipment which may be required for the treatment of such patients, or for the efficient running of the hospital.

To provide, or to assist in the provision of amenities in The Royal Marsden Hospital, Chelsea for patients and staff, including the provision and running of hospital shops, canteens, libraries, flower services, the establishment of clubs, health and recreation centres, hostels and rest and convalescent homes for the use and benefit of such persons.

Public Benefit

The activities described in this report benefit The Royal Marsden Hospital, Chelsea and its patients.

The Trustees have paid due regard to the guidance published by the Charities Commission on public benefits.

WELCOME



Sandra Franklin
President



This is the Trustees' Report and Financial Statements for the year ended 31 December 2022. It is prepared in accordance with the accounting policies set out in Notes to the Accounts and complies with the Charity's governing document, the Charities Act 2011 and Accounting and Reporting by Charities: Statement of Recommended Practice applicable to charities preparing their accounts in accordance with the Financial Reporting Standard applicable in the UK and Republic of Ireland published in October 2019.

Principal Office:

The Royal Marsden, Chelsea
203 Fulham Road, London,
SW3 6JJ

Auditors:

Haines Watts, 3rd Floor
Aissela, 46 High Street, Esher,
Surrey, KT10 9QY

Bank:

HSBC Bank plc, 95 Gloucester
Road, London, SW7 4SX

Registered Charity No: 222613

PATRON

Countess Cadogan MVO

PRESIDENT

Sandra Franklin

HON. PRESIDENT

Antoinette Pardo MBE

HON. SECRETARY

Marie Stacey

HON. TREASURER

Roderick Haywood

CO-CHAIRS

Emma Rogers
Linda Wimble

TRUSTEES

Wendy de Capell Brooke
Sandra Franklin
Roderick Hayward
Antoinette Pardo MBE
Emma Rogers
Marie Stacey
June Torrance
Linda Wimble

THANK YOU...



Emma Rogers
Co-Chair

In 2022, the Friends really stepped up to the plate and volunteers threw themselves into rebuilding the income streams which had been so badly depleted during Covid. The shop and shop trolley saw a staggering rise of 53%, Fundraising and Event income increased by 38% and the cafe re-opened after almost 18 months of being mothballed. Our volunteers have been nothing short of amazing and we are confident that the charity is well and truly back on track after the challenges of the Pandemic.

2022 was also a year of reflection coupled with a determination to ensure the foundations of the Charity were in the best possible shape. Our donors continued to support us and as we move through 2023 we are confident that legacies will enable us to stretch our funding in new and significant ways.



Linda Wimble
Co-Chair

After four incredible years, this is our last as Co-Chairs. We feel privileged and honoured to have lead the charity through these turbulent times and look forward to handing over the reins to the new Chair. The Friends is an amazing charity which relies totally on the kindness, generosity and thoughtfulness of others. We applaud you, we admire you and most importantly we thank you for everything you contribute to the Friends and to The Royal Marsden, Chelsea.

With our very best wishes,

A handwritten signature in black ink that reads "Emma + Linda". The signature is written in a cursive, flowing style.

ACHIEVEMENTS & PERFORMANCE

For approaching 90 years the Friends has been supporting the work of the hospital not only by fundraising but perhaps more importantly, by providing volunteer assistance in various areas:

The Shop & Trolley

2022 has been an outstanding year for the shop. Prior to Covid, the annual shop income was around £39,000.

In 2022 the income grew to a staggering £115,000 which represents a year-over-year increase of £32,000 when compared to 2021.

This is an extraordinary success story which is the combined result of the refurbishment which we did at the end of 2021, coupled with the enthusiasm and determination of the volunteers who work so hard to make the shop a happy place for patients, their carers, staff and visitors to the hospital.

The Café

The re-opening of the Cafe at the end of summer 2021 represented a huge milestone for the Friends. For years, the cafe was the primary source of income for the charity and the impact of Covid had a devastating effect, not just on our finances but, more importantly, the care and welfare of patients over and above their medical treatment.

The lead up to re-opening was fraught with challenges, not least in terms of getting as many of our dedicated volunteers back into the saddle as quickly as possible. By the end of 2022 things were starting to pick up and, as we gathered momentum, realised that we could, and would, get back to where we were before thanks to the kindness and determination of our volunteers.

A cup of tea, served with a friendly smile, can make the darkest of times seem more bearable.

The hospital shop is a place of refuge. It is somewhere non-clinical to browse, buy and have a friendly chat.



Flowers & Garden

The garden terraces and planters around the hospital don't just bring colour and life to the hospital but also remind us all of the sense of well-being that plants and flowers bring to our lives. The continued loving care and attention given by our talented volunteers to the garden and to the flowers in the chapel lift all our spirits and are a really wonderful feature at The Royal Marsden.

Tea Trolleys

The tea trolley roared back into service late in 2022 and patients in the Medical Day Unit are once again being served with complimentary hot drinks and biscuits by our cheerful, kind and energetic volunteers

Ward Assistance

There is something very special about being able to offer help and assistance at the bedside and the compassion shown by our volunteers in these areas never goes unnoticed by patients, their carers or staff. Throughout Covid it was simply not possible to visit the wards and the return of volunteering to these areas has been a truly positive, life affirming privilege.



What a difference a smile and a kind word can make.

Acts of small kindness go a very long way, especially in hospital.



Meet & Greet

Meet & Greet is at the heart of what the Friends represents in the hospital. Everyday, volunteers help, guide and support patients and visitors, always reassuring, always prepared to go the extra mile. These were volunteers who stepped up to the plate during Covid and have never stepped down again. They are an amazing, dedicated team.

Administrative Support

The small, but super effective and efficient team of Friends administrative and support volunteers returned to service in 2022 and have been quietly offering help and support ever since. They are a discreet but very much appreciated part of the Friends and although low key, provide a fantastic service to patients and staff.

The Arts Forum

Every year the Friends is asked to support the Arts Forum with a donation of funds to help with the display, maintenance and acquisition of art around the hospital. In addition, the Friends supports arts based activities for patients including distributing mindful art packs which have been wonderfully received.

Collection tins

Although cash was no longer king during Covid, our collection tins remained an important part of our fundraising activity, thanks to each of them having been branded with a QR code, enabling hands-free donations. Counting the cash is no mean feat and we remain hugely grateful to the volunteers who do this at least once a month.

Coffee Machines

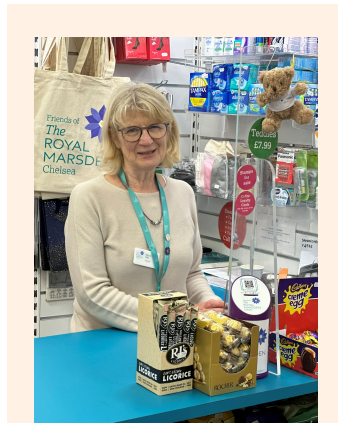
For patients being treated in areas far removed from the shop or cafe, the Friends supports the provision of Coffee Machines. These enable patients in RDAC, Cyberknife and Radiotherapy departments to grab a hot drink without leaving the waiting areas.

Piano & Aquariums

Hearing the sound of live piano music in the hospital is an outstanding feature in The Royal Marsden. We are hugely grateful to our talented volunteer players who produce such soothing sounds for us all to enjoy. The Friends also provides funds for the upkeep of the Aquariums in Outpatients and Radiotherapy, which they donated to the hospital over a decade ago.

Marketing & PR

This is managed in house by volunteers and includes the Website, online sales of Christmas cards and event tickets, the regular online Newsletter and the database. In 2022, the Friends created and produced a calendar featuring artwork provided by volunteers as well as birthday cards for patients undergoing treatment in the hospital,



Recruitment

Although many of our volunteers returned to service after Covid, our numbers were depleted and 2022 heralded an important new start.

For the first time, we advertised online for help and were really encouraged by the quality of volunteers we managed to recruit as a result. Our wonderful recruitment volunteer has done outstanding work on ensuring volunteers are compliant with all the statutory obligations which go with operating as a charity within an NHS environment and we could not be more grateful to her.

Secretarial Support

Our long-standing secretary, Camilla was joined in a job share role by Caroline Syms who we were thrilled and delighted to welcome in the Spring of 2022.

Together they form the backbone of the Charity and as the only paid members of the team ensure that the rest of us are kept on track and focused. They are a great asset and we are very lucky to have them

Information Technology

The Charity continues to push the boundaries with the introduction of cloud based software and technology including Xero, Weebly and Infodile each of which has revolutionised our way of working in a hugely positive way.

Volunteer Hours

Prior to Covid it was estimated that, each year, our front-line volunteers give around 20,000 hours of their time to the hospital.

This does not include all the additional hours given by officers, other trustees and committee members as well as those volunteers who run office support services including recruitment, bookkeeping, PR, marketing, graphic design, website, shop and café buying, shop and café merchandising.

These roles, and the time they take, often go unacknowledged but they are an integral and very significant part of running the Charity.

Treasurer & Book keeper

In 2022 we welcomed Rod Hayward to the position of Honorary Treasurer following in the footsteps of Margaret Lalor, who retired at the 2021 AGM. Rod is ably supported by Teresa Dick, our volunteer bookkeeper, who joined the Committee in 2022. Together they ensure that we fulfil our obligations as a fully audited, registered UK Charity.

Membership

By the end of 2022 the Friends had over 300 fully subscribed members, of which around 120 are volunteers.

The numbers have remained fairly steady throughout the year as new recruits are offset by retirements and new volunteers take time to go through all the checks and balances required by the NHS.



FUNDRAISING & EVENTS

Summer Drinks Party - May

Generously hosted by our Patron, Countess Cadogan, and sponsored by Rathbones, our first post-Covid party was a sell out with around 400 guests all of whom enjoyed delicious fizz, wine, cocktails and canapés. Magician Archie Manners thrilled the guests with his sleight of hand while live music kept the atmosphere lively. The evening was a huge success and raised nearly £20,000

Chelsea Arts Society Summer Exhibition - June

Once again were hugely grateful to be selected as the beneficiary charity by the Chelsea Arts Society for their Summer Exhibition. Postcard size original works of art by each of the exhibiting artists were sold during the week of the sale, raising around £3,000 for FORMC.

Bridge Day - November

Thanks to the massive efforts of volunteer and bridge aficionado, Janie Gill (AKA the Bridge Fairy), combined with the generosity of Zeb Stocken of Stocken Bridge who compiled 16 challenging hands, our annual bridge day was a sell out. Over 500 players participated remotely from around the UK and Channel Islands and the event raised almost £12,000 which went towards the purchase of wheelchairs in the hospital.

Wine Tasting - November

November got off to a great start thanks to the expertise of wine expert and volunteer Deborah Ho along with the enthusiasm and organisational skills of the Young Friends headed by Emily Eban,. Our sell-out first ever wine tasting evening was held in 70 Grosvenor Square and thanks to the generosity of our hosts, expert panel and the generosity of donors, we raised around £800.



Young Friends - Boozy Bingo, May

Thanks to Louisa Bullard and Charlie Rogers for organising this Young Friends event at Mercato Metropolitan where over 250 guests played Boozy Bingo and between all of them, raised around £5,000 for the charity.



Carols by Candlelight - December

Our first ever 'solo' Carol Concert was held in Chelsea Old Church and it was a sellout success with around 300 guests. Guest speakers included CEO of The Royal Marsden, Dame Cally Palmer and actor Adrian Dunbar. Music was provided by the very talented church choir. Drinks and canapés were served in the Petyt Hall after the service and the evening raised over £10,000.

Christmas Day Gifts

Christmas Day has always been an important part of the Friends' Calendar as volunteers distribute gifts to every in-patient in the hospital. Goodie bags were packed and were personally handed out to almost 100 in-patients. Huge thanks to the "Royal Marsden Cancer Charity" who provided scarves, which went into our specially branded tote bags, along with a tin of biscuits pens, key rings and a Christmas Card, donated by the Friends.



Future Events

Planned 2023 events include:

- Quiz night
- Bridge Day
- Celebrate a Life (in collaboration with the Royal Marsden Cancer Charity)
- Carols by Candlelight

WHERE THE MONEY GOES

	EXPENDITURE 2022	£
EQUIPMENT & AMENITIES	Head & Neck Micromanipulator laser	33,900
	4DCT Respiratory gating for scanners	26,000
	Research Salary - Dr Popat from Katie Rockley Concert	24,570
	Refurbishment of Horder Ward staff room	15,169
	RDAC/Radiotherapy/Cyberknife Coffee Machines	4,326
	Training module - Laryngectomy	2,172
	Urinanalysis machine	900
	Facilities - maintenance of roof terraces and gardens**	730
	Fresh Flowers	664
	Patient Well being - Aromatherapy Supplies	557
	Christmas presents for patients	432
	Arts- Piano and related costs **	405
	Mobile spinner for books	354
	Sepsis bags	211
	Stool for Meet & Greet	83
TOTAL CHARITABLE EXPENDITURE	110,473	

Every year, the Friends commits between £200,000 to £250,000 to fund the purchase of equipment, services and amenities for the benefit of patients, their carers and staff at The Royal Marsden, Chelsea. Decisions regarding funding are taken at each of the nine Committee meetings held throughout the year.

Due to the knock-on effect of the pandemic, 2022 was another exceptional year and requests from the hospital were much reduced due to various unforeseen circumstances largely resulting from Covid.

There is currently an outstanding commitment of £186,446 (reported in the accounts) which has not yet been invoiced and which would have brought the 2022 spend up to it's targeted level.

** Ringfenced from the Rosemary Green Fund

FINANCIAL SUMMARY

In 2022, before it paid for any equipment or amenities to benefit the hospital and its patients, the net income of Friends of The Royal Marsden, Chelsea (FORMC) was £197,869 (2021: £212,636).

ACTIVITIES	NET INCOME 2022 £	NET INCOME 2021 £	Percentage change year over year
Donations and Subscriptions	68,448	73,948	-7%
Net Income: Legacies & Will Trusts	40,279	85,463	-52%
Net Income: Shop & Shop Trolley	51,311	33,515	53%
Net Income: Café	-843	-6,409	87%
Net Income: Fundraising Events and Sponsorship	58,219	42,145	38%
Net Income: Miscellaneous	-379	-587	35%
Investment Income	1,589	348	357%
Less: Salary and Support Costs	-21,204	-15,786	34%
Total	197,869	212,636	-7%

- Overall, total income increased 13% from £301,433 to £341,293, driven for the most part by the recovery of our trading operations in the shop and café, along with our fundraising activities, all of which had suffered badly from the effects of Covid.
- Income from donations and legacies fell by 30%, from £167,657 to £116,179, having benefited in 2021 from one particularly generous legacy of £50,000.
- Trading activities in the Shop and Trolley increased by 38%. The Café reopened during 2022 and brought in sales of almost £20,000.
- The Summer Drinks Party, Carol concert and a Bridge evening between them raised more than £40,000. We also had two marathon runners who raised sponsorship of over £3,000.
- Salary and Support Costs increased by 25%, as we recruited a second part-time office assistant, and as the Coronavirus Job Retention Scheme was wound down.
- Net donations to the hospital increased from £92,407 in 2021 to £110,473 in 2022, including medical and other technical equipment and a new project to sponsor technical training for one of the senior medical staff. For the future, we have agreed to cover the cost of projects which the hospital is already committed to, and are also committed in principle to a further £130,000 of projects which the hospital is assessing.

Financial Position at the Year End

FORMC continues to remain in a strong financial position at the year-end with a 10% increase in Accumulated Funds from £792,000 at 31 December 2021 to £873,000 at 31 December 2022.

Charitable spend was down (insert percentage) on the prior year but FORMC is committed to (£186,000 for equipment and amenities for the hospital). Cash and deposits at year end are £895,000 a 12% increase from £796,000 at 31 Dec 2022. This strong cash position will help ensure that the Friends continues to fulfil the objects of the Charity as stated on page 3.

Reserves Policy

Generally the Restricted and Unrestricted funds of FORMC are available to be spent as the Trustees and Committee decide, the only exceptions being as follows:

- Restricted Funds: The funds provided by the Campbell-Paterson Will Trust must be spent on purchases of medical equipment.
- FORMC has chosen to ring-fence Mrs Rosemary Green's 2013 donation (£56,000) as it was Mrs Green's wish that the funds be used to pay for items that improve the patient's environment. These funds have a remaining balance of £14,263.

After taking the above into account, FORMC does not hold any reserves. However it does aim to maintain a level of funds at a minimum of £250,000 that it considers necessary to protect current activities in a way that enables the Charity to meet its responsibilities and to ensure that it continues to operate on a 'Going Concern' basis without risk.

Structure, Governance and Management

FORMC is governed by the Objects and Rules as amended and altered by the members of FORMC at the Extraordinary General Meeting of FORMC held on 29 November 2007 and effective from 1 January 2008. The Objects and Rules have been amended and re-registered by the Charities Commission on the 6th November 2015. Trustees are nominated by the Committee of FORMC and shall comprise the President of FORMC and a minimum of three members nominated by the Committee for appointment at the Annual General Meeting. The trustees have delegated the conduct and management of the affairs of FORMC to the Committee in accordance with the Objects and Rules.

Remuneration to Charity Trustees

FORMC paid no remuneration or other benefits in kind to a Charity trustee.

Relationships with other Charities

The Royal Marsden NHS Foundation Trust has its own fundraising charity which concentrates on major capital projects and the support of research funds. The trustees of FORMC consider that the income generating activities of their charity, as operated by the dedication of its volunteers, in providing highly visible services, are complementary to the work of the main hospital charity. A significant number of volunteers are recruited from former patients and their families and friends. FORMC meets from time to time with the Friends of other large London hospitals to discuss matters of common interest and to share ideas for providing services and fundraising.

Trustees Responsibilities in Relation to the Financial Statements

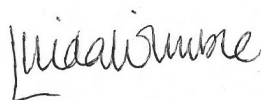
The trustees are responsible for preparing the Trustees' Annual Report and the Financial Statements in accordance with applicable law and United Kingdom Accounting Standards (United Kingdom Generally Accepted Accounting Practice).

The law applicable to charities in England & Wales requires the trustees to prepare Financial Statements for each financial year which give a true and fair view of the situation of the Charity and of the incoming resources and application of resources of the Charity for that period. In preparing these Financial Statements, the trustees are required to:

- select suitable accounting policies and then apply them consistently.
- observe the methods and principles in the Charities SORP 2019 (FRS 102);
- make judgements and estimates that are reasonable and prudent;
- state whether applicable accounting standards have been followed, subject to any material departures disclosed and explained in the Financial Statements;
- prepare the Financial Statements on the going concern basis unless it is inappropriate to presume that the Charity will continue in operation.

The trustees are responsible for keeping proper accounting records that disclose with reasonable accuracy at any time the financial position of the Charity and enable them to ensure that the Financial Statements comply with the Charities Act 2011, the Charities (Accounts and Reports) Regulations 2008 and the provisions of the Trust deed. They are also responsible for safeguarding the assets of the Charity and hence for taking reasonable steps for the prevention and detection of fraud and other irregularities.

The trustees are responsible for the maintenance and integrity of the Charity and financial information included on the Charity's website. Legislation in the United Kingdom governing the preparation and dissemination of Financial Statements may differ from legislation in other jurisdictions.



Linda Wimble, Co-Chair
On behalf of the trustees
14th June, 2023



Emma Rogers, Co-Chair
On behalf of the trustees
14th June 2023

INDEPENDENT AUDITORS REPORT

Opinion

We have audited the financial statements of Friends of the Royal Marsden, Chelsea (the 'charity') for the year ended 31st December 2022, which comprise the Statement of Financial Activities, the Balance Sheet and Notes to the Financial Statements, including a summary of significant accounting policies. The financial reporting framework that has been applied in their preparation is applicable law and United Kingdom Accounting Standards, including Financial Reporting Standard 102 'The Financial Reporting Standard applicable in the UK and Republic of Ireland' (United Kingdom Generally Accepted Accounting Practice).

In our opinion the financial statements:

- give a true and fair view of the state of the charity's affairs as at 31st December 2022 and of its incoming resources and application of resources, for the year then ended;
- have been properly prepared in accordance with United Kingdom Generally Accepted Accounting Practice; and
- have been prepared in accordance with the requirements of the Charities Act 2011.

Basis for opinion

We conducted our audit in accordance with International Standards on Auditing (UK) (ISAs (UK)) and applicable law. Our responsibilities under those standards are further described in the Auditors' responsibilities for the audit of the financial statements section of our report. We are independent of the charity in accordance with the ethical requirements that are relevant to our audit of the financial statements in the UK, including the FRC's Ethical Standard, and we have fulfilled our other ethical responsibilities in accordance with these requirements. We believe that the audit evidence we have obtained is sufficient and appropriate to provide a basis for our opinion.

Conclusions relating to going concern

We have nothing to report in respect of the following matters in relation to which the ISAs (UK) require us to report to you where:

- the Trustees' use of the going concern basis of accounting in the preparation of the financial statements is not appropriate; or
- the Trustees have not disclosed in the financial statements any identified material uncertainties that may cast significant doubt about the charity's ability to continue to adopt the going concern basis of accounting for a period of at least twelve months from the date when the financial statements are authorised for issue.

Our responsibilities and the responsibilities of the Trustees with respect to going concern are described in the relevant sections of this report.

Other information

The Trustees are responsible for the other information. The other information comprises the information included in the Trustees annual report, but does not include the financial statements and our Report of the Auditors thereon.

Our opinion on the financial statements does not cover the other information and, except to the extent otherwise explicitly stated in our report, we do not express any form of assurance conclusion thereon.

In connection with our audit of the financial statements, our responsibility is to read the other information and, in doing so, consider whether the other information is materially inconsistent with the financial statements or our knowledge obtained in the audit or otherwise appears to be materially misstated. If we identify such material inconsistencies or apparent material misstatements, we are required to determine whether this gives rise to a material misstatement in the financial statements themselves. If, based on the work we have performed, we conclude that there is a material misstatement of this other information, we are required to report that fact. We have nothing to report in this regard.

Matters on which we are required to report by exception

We have nothing to report in respect of the following matters in relation to which the Charities (Accounts and Reports) Regulations 2008 require us to report to you if, in our opinion:

- the information given in the financial statements is inconsistent in any material respect with the Trustees' report; or
- sufficient accounting records have not been kept; or
- the financial statements are not in agreement with the accounting records; or
- we have not received all the information and explanations we require for our audit.

Responsibilities of Trustees

As explained more fully in the Statement of Trustees Responsibilities set out on page four, the Trustees are responsible for the preparation of the financial statements and for being satisfied that they give a true and fair view, and for such internal control as the Trustees determine necessary to enable the preparation of financial statements that are free from material misstatement, whether due to fraud or error.

In preparing the financial statements, the Trustees are responsible for assessing the charity's ability to continue as a going concern, disclosing, as applicable, matters related to going concern and using the going concern basis of accounting unless the Trustees either intend to liquidate the charity or to cease operations, or have no realistic alternative but to do so.

Auditors' responsibilities for the audit of the financial statements

We have been appointed as auditor under section 145 of the Charities Act 2011 and report in accordance with regulations made under section 154 of that Act.

Our objectives are to obtain reasonable assurance about whether the financial statements as a whole are free from material misstatement, whether due to fraud or error, and to issue a Report of the Auditors that includes our opinion. Reasonable assurance is a high level of assurance, but is not a guarantee that an audit conducted in accordance with ISAs (UK) will always detect a material misstatement when it exists. Misstatements can arise from fraud or error and are considered material if, individually or in the aggregate, they could reasonably be expected to influence the economic decisions of users taken on the basis of these financial statements.

Irregularities, including fraud, are instances of non-compliance with laws and regulations. We design procedures in line with our responsibilities, outlined above, to detect material misstatements in respect of irregularities, including fraud. The extent to which our procedures are capable of detecting irregularities, including fraud is detailed below:

We gained an understanding of the legal and regulatory framework applicable to the charity and the industry in which it operates, and considered the risk of acts by the charity that were contrary to applicable laws and regulations, including fraud. We discussed with the Treasurer the policies and procedures in place regarding

compliance with laws and regulations. We discussed amongst the audit team the identified laws and regulations, and remained alert to any indications of non-compliance.

During the audit we focused on laws and regulations which could reasonably be expected to give rise to a material misstatement in the financial statements, including, but not limited to, the Charities Act 2011 and UK tax legislation. Our tests included agreeing the financial statement disclosures to underlying supporting documentation and enquiries with management.

Our procedures in relation to fraud included but were not limited to: inquires of management whether they have any knowledge of any actual, suspected or alleged fraud, and discussions amongst the audit team regarding risk of fraud such as opportunities for fraudulent manipulation of financial statements. We determined that the principal risks related to posting manual journal entries to manipulate financial performance and management bias through judgements in accounting estimates. We also addressed the risk of management override of internal controls, including testing journals and evaluating whether there was evidence of bias by the Trustees that represented a risk of material misstatement due to fraud.

Because of the inherent limitations of an audit, there is a risk that we will not detect all irregularities, including those leading to a material misstatement in the financial statements or non-compliance with regulation. This risk increases the more that compliance with a law or regulation is removed from the events and transactions reflected in the financial statements, as we will be less likely to become aware of instances of non-compliance. The risk is also greater regarding irregularities occurring due to fraud rather than error, as fraud involves intentional concealment, forgery, collusion, omission or misrepresentation.

A further description of our responsibilities for the audit of the financial statements is located on the Financial Reporting Council's website at www.frc.org.uk/auditorsresponsibilities. This description forms part of our Report of the Auditors.

Use of our report

This report is made solely to the charity's Trustees, as a body, in accordance with Part 4 of the Charities (Accounts and Reports) Regulations 2008. Our audit work has been undertaken so that we might state to the charity's Trustees those matters we are required to state to them in a Report of the Auditors and for no other purpose. To the fullest extent permitted by law, we do not accept or assume responsibility to anyone other than the charity and the charity's Trustees as a body, for our audit work, for this report, or for the opinions we have formed.

Signed:

Date: 14th June, 2023



Jane Wills FCA MA (Senior Statutory Auditor)
for and on behalf of Haines Watts Chartered Accountants
Statutory Auditor
Aissela, 46 High Street
Esher, Surrey
KT10 9QY

Haines Watts Kingston LLP is eligible for appointment as auditor of the charity by virtue of its eligibility for appointment as auditor of a company under section 1212 of the Companies Act 2006.

Statement of Financial Activities for the year ended 31 December 2022

	Note	Unrestricted Funds 2022 £	Restricted Funds 2022 £	Total Funds 2022 £	Total Funds 2021 £
INCOME and ENDOWMENTS					
INCOME FROM					
Donations and Legacies	2	81,800	34,379	116,179	167,657
Charitable Activities					
Refreshment Bars, Shop and Fundraising	2	206,777	-	206,777	131,888
Other Trading Activities	2	16,748	-	16,748	1,540
Investments	2	1,312	277	1,589	348
TOTAL INCOME and ENDOWMENTS		306,637	34,656	341,293	301,433
EXPENDITURE ON					
Trading and Fundraising Costs	3	136,415	7,008	143,422	88,797
Charitable Activities	3	53,601	62,972	116,573	98,980
TOTAL RESOURCES EXPENDED		190,016	69,980	259,995	187,777
NET MOVEMENT IN FUNDS		116,621	- 35,323	81,298	113,656
RECONCILIATION OF FUNDS					
TOTAL FUNDS BROUGHT FORWARD AT 1 JANUARY 2022		680,634	111,258	791,892	678,236
TOTAL FUNDS CARRIED FORWARD AT 31 DECEMBER 2022		797,255	75,935	873,190	791,892

The Statement of Financial Activity includes all gains and losses recognised in the year.
 The notes on pages 21-27 form part of these Financial Statements.

Balance Sheet for the year ended 31 December 2022

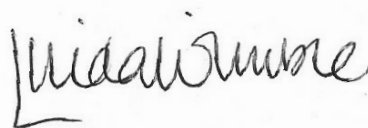
	Unrestricted	Restricted		
Note	Funds	Funds	Total Funds	Total Funds
	2022	2022	2022	2021
	£	£	£	£
FIXED ASSETS				
Tangible Fixed Assets	28,744	-	28,744	34,265
Total Fixed Assets	28,744	-	28,744	34,265
CURRENT ASSETS				
Stocks	10,088	-	10,088	6,194
Debtors and Prepayments	7,398	23,487	30,885	39,935
Short Term Deposits	332,686	11,891	344,577	343,120
Cash at Bank and in hand	445,609	104,404	550,013	452,919
Net Current Assets	795,781	139,782	935,563	842,168
LIABILITIES				
Creditors: amounts falling due within one year	27,270	63,847	91,117	84,541
NET ASSETS	797,255	75,935	873,190	791,892
REPRESENTED BY:				
Restricted and Unrestricted Funds	797,255	75,935	873,190	791,892
ACCUMULATED FUNDS AT 31 DECEMBER 2022	797,255	75,935	873,190	791,892

The notes on pages 21-29 form part of these Financial Statements.

The Financial Statements were approved by the Trustees on (insert date) and signed on their behalf by:



Roderick Hayward
Honorary Treasurer & Trustee
14th June, 2023



Linda Wimble
Co-Chair & Trustee
14th June 2023

Notes to the Financial Statements for the year ended 31 December 2022

1. Accounting Policies

The principal accounting policies adopted, judgements and key sources of estimation uncertainty in the preparation of the Financial Statements are as follows:

1.1 Basis of Preparation

Friends of The Royal Marsden, Chelsea is an unincorporated Charity registered in England. The address of the registered office is given in the Charity information on page 4 of these Financial Statements.

The Charity constitutes a public benefit entity as defined by FRS 102.

The Financial Statements have been prepared in accordance with Accounting and Reporting by Charities: Statement of Recommended Practice applicable to charities preparing their accounts in accordance with the Financial Reporting Standard applicable in the UK and Republic of Ireland issued in October 2019, the Financial Reporting Standard applicable in the United Kingdom and Republic of Ireland (FRS 102), the Charities Act 2011, and UK Generally Accepted Accounting Practice.

The Financial Statements are prepared on a going concern basis under the historical cost convention, modified to include certain items at fair value. The Financial Statements are presented in sterling which is the functional currency of the Charity and rounded to the nearest £.

The significant accounting policies applied in the preparation of these Financial Statements are set out below. These policies have been consistently applied to all years presented unless otherwise stated.

1.2 Fund Accounting

Unrestricted Funds are funds that are available for use at the discretion of the Trustees to advance the general objectives of the Charity and that have not been designated for other purposes.

There is one Restricted Fund, the WL Campbell-Paterson Will Trust, under which the FORMC is required to use all income from the Trust to provide medical equipment to The Royal Marsden NHS Foundation Trust. Also ring-fenced but still held in unrestricted funds is £14,263, which is the amount remaining of the £56,000 donation Mrs Rosemary Green made in 2013. These funds are earmarked for spending that will directly benefit the well-being of the patients.

1.3 Accounting Policies

INCOMING RESOURCES: All incoming resources are included in the Statement of Financial Activities when FORMC is entitled to the income and the amount can be measured with sufficient reliability. Legacies are included when the Friends are advised by the personal representative of an estate that payment will be made, or property transferred and the amount involved can be quantified.

Where incoming resources have related expenditure, as with fundraising, the incoming resources and related expenditure are reported gross in the Statement of Financial Activities.

Donations are only included in the Statement of Financial Activities when the Charity has unconditional entitlement to the resources.

Incoming resources from tax reclaims are included in the Statement of Financial Activities at the same time as the gift to which they relate.

Donated services and facilities are only included in incoming resources, with an equivalent amount in resources expended, where the benefit to the Charity is reasonably quantifiable, measurable and material.

The value placed on these resources is the estimated value to the Charity of the service or facility received. The value of any voluntary help received is not included in the accounts but is described in the Trustees' Annual Report. Investment income is included in the accounts when receivable.

Notes to the Financial Statements for the year ended 31 December 2022

RESOURCES EXPENDED: All expenditure is accounted for on an accrual basis and included under expense categories that aggregate costs for allocation to activities. Where costs cannot be directly attributed to particular activities, they have been allocated on a basis consistent with the use of the resources.

VALUE ADDED TAX: Income and Expenditure are shown net of recoverable VAT.

ASSETS: Tangible fixed assets are capitalised if they can be used for more than one year and cost more than £500. They are stated at cost less depreciation. Depreciation is provided at rates calculated to write off the cost of fixed assets, less their estimated residual value, over their expected useful lives on the following basis: Café equipment - 25% straight line over four years; Café refurbishment and Shop refurbishment - 10% straight line over ten years. Stocks are valued at the lower of cost or market value.

FINANCIAL INSTRUMENTS: Financial assets and financial liabilities are recognised in the balance sheet when the charity becomes a party to the contractual provisions of the instrument. Trade and other debtors and creditors are classified as basic financial instruments and measured at initial recognition at transaction price. Cash and cash equivalents are classified as basic financial instruments and comprise cash in hand and at bank. Financial liabilities are classified in accordance with the substance of the contractual arrangements entered into and the definitions of a financial liability.

GRANT INCOME: Grant income is recognised under the accrual model of Financial Reporting Standard 102. Grant income is recognised in the profit and loss account on a systematic basis over the period in which the charity recognises the related costs for which the grant is intended to compensate.

GOING CONCERN: The financial statements have been prepared on a going concern basis. The Trustees have reviewed and considered the consequences of Covid-19 and other events and conditions, and have determined that they do not create a material uncertainty that casts significant doubt upon the entity's ability to continue as a going concern.

OPERATING LEASE AGREEMENTS: Rentals payable under operating leases are charged against income on a straight line basis over the term of the lease.

PENSION COSTS: The charity provides the staff with the benefit of a defined contribution pension which is paid into either the charity pension scheme or a scheme of their choice. The scheme is managed, and their assets are held, by independent managers. The pension charge represents contributions due from the charity and amounted to £162 (2021 - £219). Contributions payable to the charity's pension scheme are charged in the period to which they relate.

Notes to the Financial Statements for the year ended 31 December 2022

	Unrestricted Funds 2022 £	Restricted Funds 2022 £	Total Funds 2022 £	Unrestricted Funds 2021 £	Restricted Funds 2021 £	Total Funds 2021 £
2. INCOME FROM DONATIONS and LEGACIES						
Subscriptions	23,659	-	23,659	26,508	-	26,508
Donations	44,789	-	44,789	47,440	-	47,440
Legacies	13,352	-	13,352	54,000	-	54,000
WL Campbell-Paterson Will Trust	-	40,726	40,726	-	39,709	39,709
TOTAL DONATIONS AND LEGACIES	81,800	40,726	122,526	127,948	39,709	167,657
OTHER TRADING ACTIVITIES						
Friends Shop & Trolley	115,310	-	115,310	83,783	-	83,783
Friends Café	19,833	-	19,833	0	-	0
Young Friends Event	5,855	-	5,855	0	-	0
Christmas Cards	9	-	9	5,405	-	5,405
Grand Sale	-	-	-	2,770	-	2,770
Summer Drinks Party	36,851	-	36,851	-	-	-
Piano Recital	25	-	25	30,077	-	30,077
Bridge Evening	12,240	-	12,240	9,790	-	9,790
Carol Concert	16,608	-	16,608	-	-	-
Miscellaneous Income	-	-	-	45	-	45
Easyfundraising	45	-	45	19	-	19
TOTAL INCOME FROM CHARITABLE ACTIVITIES	206,777	-	206,777	131,888	-	131,888
OTHER TRADING ACTIVITIES						
Coronavirus Job Retention Grant	-	-	-	1,540	-	1,540
Sponsorship	16,748	-	16,748	0	-	0
TOTAL OTHER TRADING ACTIVITIES	16,748	-	16,748	1,540	-	1,540
INCOME from INVESTMENTS	1,312	277	1,589	340	8	348

Notes to the Financial Statements for the year ended 31 December 2022

	Unrestricted Funds 2022 £	Restricted Funds 2022 £	Total Funds 2022 £	Unrestricted Funds 2021 £	Restricted Funds 2021 £	Total Funds 2021 £
3. TRADING AND FUNDRAISING COSTS						
Friends Shop & Trolley	63,999	-	63,999	50,268	-	50,268
Friends Café	20,676	-	20,676	6,409	-	6,409
Salary & Support Costs *	21,004	-	21,004	16,714	-	16,714
Portfolio Fees	-	7,002	7,002	-	8,246	8,246
Young Friends Event	832	-	832	-	-	-
Christmas Cards	4,327	-	4,327	3,475	-	3,475
Grand Sale	-	-	-	33	-	33
Summer Drinks Party	16,510	-	16,510	-	-	-
Piano Recital	-	-	-	1,355	-	1,355
Bridge Evening	2,256	-	2,256	1,034	-	1,034
Carol Concert	6,194	-	6,194	-	-	-
Miscellaneous	418	6	424	615	36	652
Marketing	200	-	200	612	-	612
TOTAL TRADING AND FUNDRAISING COSTS	136,415	7,008	143,423	80,515	8,282	88,797
CHARITABLE ACTIVITIES						
AMENITIES AND EQUIPMENT PROVIDED						
Head & Neck Micromanipulator Laser	-	33,900	33,900	-	-	-
4DCT RGSC Respiratory Gating for Scanners	-	26,000	26,000	-	-	-
Dr Poppat research salary	24,570	-	24,570	-	-	-
Revamp Horder Ward Staff room	15,169	-	15,169	-	-	-
RDAC/Radiotherapy/Cyberknife Support	4,326	-	4,326	-	-	-
Training module-Laryngectomy	-	2,172	2,172	-	-	-
Urinanalysis machine	-	900	900	-	-	-
Facilities- Maintenance of Roof Terraces and Gardens **	730	-	730	-	-	-
Fresh Flowers	664	-	664	-	-	-
Patient Wellbeing- Aromatherapy Supplies	557	-	557	-	-	-
Christmas & Presents for Patients	432	-	432	-	-	-
Arts- Piano and Related Costs**	405	-	405	-	-	-
Mobile library spinner for books	354	-	354	-	-	-
Sepsis bags	211	-	211	-	-	-
stool for meet and greet	83	-	83	-	-	-
TOTAL AMENITIES AND EQUIPMENT PROVIDED	47,501	62,972	110,473	92,407	-	92,407
GOVERNANCE COSTS						
AGM costs	-	-	-	924	-	924
Audit costs	6,100	-	6,100	5,650	-	5,650
TOTAL GOVERNANCE COSTS	6,100	-	6,100	6,574	-	6,574
TOTAL CHARITABLE ACTIVITIES	53,601	62,972	116,573	98,981	-	98,981

* Included in Support Costs is £ Nil (2020: £Nil) payable to the auditors in relation to other financial services provided during the year.

** Ringfenced from the Rosemary Green Fund

Notes to the Financial Statements for the year ended 31 December 2022

4. STAFF COSTS

	2022	2021
	£	£
Staff Costs were as follows:		
Salary	16,711	15,990
Employers Pension Costs	162	162
Total Staff Costs	16,873	16,152

The average number of employees during the year was two (2021- one).

5. TRANSACTIONS WITH TRUSTEES

During the year no Trustee received any remuneration (2021- none).

During the year no Trustee received any benefits in kind (2021- none).

During the year no Trustee expenses were reimbursed or paid by the Charity (2021- none).

6. TANGIBLE FIXED ASSETS

	Café & Shop Equipment 2022 £
COST	
Balance brought forward	62,369
Additions during the year	-
Disposals during the year	-
Balance carried forward	62,369
ACCUMULATED DEPRECIATION	
Balance brought forward	28,104
Charge during the year	5,521
Disposals during the year	-
Balance carried forward	33,625
NET BOOK VALUE AS AT 31 DECEMBER 2022	28,744
NET BOOK VALUE AS AT 1 JANUARY 2022	34,265

7. DEBTORS

	Unrestricted Funds 2022 £	Restricted Funds 2022 £	Total Funds 2022 £	Total Funds 2021 £
Trade Debtors	280	-	280	633
Prepayments	1,942	-	1,942	2,468
Other Debtors	5,175	23,487	28,662	36,834
Total	7,398	23,487	30,885	39,935

Notes to the Financial Statements for the year ended 31 December 2022

8. CREDITORS

	Unrestricted Funds 2022 £	Restricted Funds 2022 £	Total Funds 2022 £	Total Funds 2021 £
Trade Creditors	13,730	-	13,730	9,140
Accruals	11,639	63,847	75,486	53,842
Other Creditors	1,901	-	1,901	18,228
Taxation & Social Security	-	-	-	3,331
Total	27,270	63,847	91,117	84,541

9. CHARITABLE COMMITMENTS

At December 31, 2022 Friends of The Royal Marsden, Chelsea had agreed to fund the following:

	2022 £
CCU-Avento reclining Chairs	56,502
Gynaecology equipment	50,709
Microbiology -Dual Function Microscope	48,390
Wheelchairs	14,558
Vascular Access Service- Catheter Tip Location Device	8,000
Hybrid mattresses	5,000
Head and Neck-Fine needle surgical instruments	3,000
Occupational Therapy- 50 Handheld Fans	287
TOTAL OUTSTANDING COMMITMENTS AT 31 DECEMBER 2022	186,446
TOTAL OUTSTANDING COMMITMENTS AT 31 DECEMBER 2021	121,049

FORMC also supports hospital patients and staff by providing payment for many other routine costs including:

RDAC/Radiotherapy/Cryotherapy- Complementary Hot Drinks
Refreshments for Well-being Events
Piano- Maintenance*
Various items for Complimentary Therapies
Roof Terraces and Gardens- Maintenance*

* Money donated by the Rosemary Green Fund

10. OPERATING LEASES

Total future minimum lease payments under non-cancellable operating leases fall due as follows:

	2022 £	2021 £
Within one year	5,788	6,178
Between one and 5 years	3,243	5,569
More than five years	-	-
TOTAL OPERATING LEASES	9,031	11,747

Total operating lease expenditure included in the Statement of Financial Activities is £6,178 (2021: £5,711).

Notes to the Financial Statements for the year ended 31 December 2022

11. DONATED SERVICES

FORMC received various free services from the hospital which, although theoretically possible, would be difficult to value, and therefore this is not considered to be worthwhile. These donated services consist of:

Space for a small shop, shop stock, a small café, a small office and storage;

Payment on postage of outgoing mail;

Four computers, all of which are linked to the hospital network; two printers and, as necessary, computer service support.

12. RELATED PARTIES

Included in Income and Endowments is £2,007 (2021: £690) donated by Trustees during the year.

BECOME A FRIEND

Would you like to join Friends of The Royal Marsden, Chelsea
as a volunteer or a non-volunteering member?
Sign up on www.formc.uk

BECOME A CORPORATE MEMBER

Would you like to support a local charity as part of your
corporate & social responsibility programme?
email us: friends.chelsea@rmh.nhs.uk

SUPPORT US

Don't miss out on forthcoming events.
Check out for updates on formc.uk

DONATE

Every donation really does make a difference.
Scan the QR code below with your smart phone camera to make
an immediate donation



Registered Charity No: 222613